

Flo's - The Place in the Park



Annual Impact Report

Sept 2022 - Sept 2023



Welcome from our Director & Chair

It is a great pleasure to introduce this, our 5th Annual Impact Report

Flo's means a great many different things to different people, and this report aims to showcase the richness and diversity of activities that take place in our corner of Florence Park, and increasingly, into the wider community. For many people we are a physical hub, a place to meet, or to come for events and activities – but we hope that what goes on within our walls and gardens sends out ripples beyond, meeting people where they are.

If you are picking up this report as a casual visitor to Flo's, we hope it will help reveal some of the more hidden ways in which we are working with partners in OX4 to help tackle urgent issues like health, education and food insecurity. We could not continue to generate this impact locally without your support, whether as a member, donor, volunteer or customer. So next time you pick up your cup of coffee at the café, we thank you for supporting all that follows!



Looking forward: challenges and opportunities

Like most other small charitable organisations, Flo's has faced challenges this year and will need to put in place firm plans to weather the coming years. We, and our communities, have growing needs and stresses as the cost-of-living increases. Meanwhile, the climate crisis and worldwide human crises continue to impact our physical environment, our means of sustainability and the nature and make-up of the communities we serve. A key focus this year will be increasing the resilience and profitability of the café and shop whilst strengthening our social programmes for impact and inclusion.

As a community café we want to keep our prices affordable to all, but to break even and pay back start-up loans we need to charge commercial prices. In the last year this dilemma meant that Flo's Trading ended the year with a small deficit of around £10K on a turnover of £500K.

To recover this loss and work towards future sustainability it is likely we will need to invest substantially in remodelling the kitchen and the café space, as well as exploring a range of new hospitality options.

We are working with colleagues at the Oxford University Hospitals Trust and local Primary Care Trusts to develop better community-based health services on site, but we are running out of space to increase our services and accommodate our growing staff. We are in negotiation with Oxford City Council about longer term use of the Bowling Pavilion and other ideas for expansion. We much appreciate the rent holiday for two years running from Oxfordshire County Council, who our landlords. We are in conversation at the moment to find ways to reduce or eliminate this rent going forward, which will enable us to continue to sustainably provide our community functions.

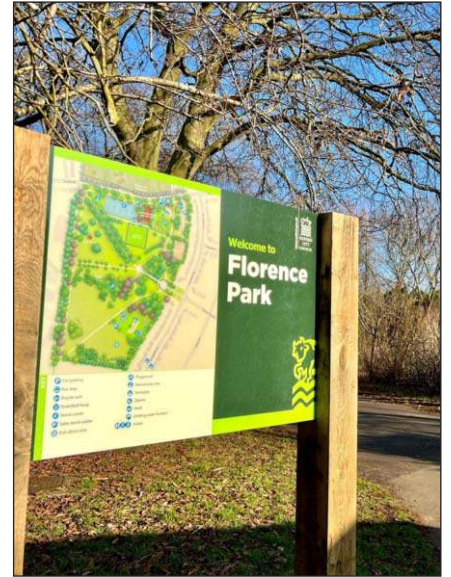
Flo's is increasingly becoming a community-managed anchor organisation in OX4, with the infrastructure and expertise to support other grass roots organisations to secure funding. We are working with them in solidarity to raise the resources they need to speak, be heard and continue to thrive.

And finally we thank all of you who are reading, for your interest, and your many and varied contributions to Flo's. There are so many people who make this place so special and alive – please continue to be involved as we grow and develop. We hope you enjoy reading about what Flo's has been up to this year in the rest of this report. Here's to another five fabulous years - whatever they bring!



Candida March
Interim Director
July 2022 - April 2023

Julian Cottee
Interim Co-Chair
Sept 2022 - June 2023



Welcome from Laura, our new director



Coming on board as the new director is a joy, a privilege and a challenge

During my first few months, I have enjoyed meeting staff, volunteers, customers and service users and feel a strong sense of responsibility to ensure the sustainability of Flo's for all of these people, whose lives we impact in diverse ways.

For the year ahead, I hope to focus on supporting staff to thrive in their areas of work, as we need each and every one of them to be united in our vision to serve the community. Listening to all of our stakeholders is an important part of how we will continue to serve the community, so I will be exploring ways to grow and expand our feedback loop, to enable an inclusive knowledge base for future developments.

You can expect to see more of the same wonderful work that has been so well established by the founding team, alongside some new developments that will support us to improve our current offer.



Oxford's Lord Mayor, Councillor Lubna Arshad, with Laura Sewell at Flo's 5th birthday

Our Mission

To grow a community enterprise hub(s): providing better local ethical opportunities for people to work, eat, play, learn and connect with each other, reducing inequalities and supporting the environment.



What have we been up to?

Here are just a few highlights from the last year:

Community Assets

We make socially and environmentally just use of space

- Flo's Nature Nursery spent even more time outside, with the nursery children spending most mornings at the NaturEscape in Florence Park - a space Flo's has brought back into community use. The nursery also plans a second site as the Forest Nursery School at the Barracks Lane Community Garden.
- 2 additional midwifery teams joined us at Flo's, so we now host 3 community midwife teams and redeveloped a new additional clinic room for their use.

Community wellbeing & justice

We deliver and host services that help people feel better

- We launched a new co-produced community programme 'Early Lives Equal Start' that supports pregnant women and new parents from Black and minoritised groups.
- 'Meals on Mondays' became weekly - offering pay-as-you-can lunch every Monday. We determinedly continue to offer a £1 cup of tea and a cheaper food option on the other days of the week.

Finance working locally

We create social enterprise enabling people to spend and earn locally

- This was our first year turning over more than £1million!
- Flo's has created 43 local jobs.
- We supported 2 new social enterprises: OCA kitchen and No Vice Ice.



Core purposes

Community ownership:

a hub run by the community
for the community

Community assets:

making just use of space socially
and environmentally

Finance working locally:

supporting social enterprise
and the circular economy

Community wellbeing:

delivering and hosting services
that help people feel better

Community ownership

We are a hub run by the community
for the community

- Continued to run Flo's, the pavilion and the NaturEscape as local community assets.
- Installed solar panels and began generating our own electricity.
- We were winners of the UK Social Enterprise Awards 2022 in the Place Based Social Enterprise category, sponsored by The Esmée Fairbairn Foundation.



Flo's last year in numbers:

- 66 volunteers who collectively donated 2,353 hours of their time
- Supported 47 women through case work referred to the Early Lives Equal Start project
- Hosting 3 midwifery teams, 1 team of health visitors and 7 other regular community groups based at Flo's
- 43 staff members
- 60 families in the nursery
- 15 free community events
- 4 different groups for under-5s each week
- 1626 lunches served at our community meals
- 884kwh of energy have been generated from Flo's solar panels in the first 6 months

Nature Nursery

Flo's Nature Nursery aims to be a home from home where children take part in everyday family routines, such as preparing snacks, setting the tables and clearing up afterwards. We are outside, whenever possible, enjoying the variety which the natural environment provides us with.

As usual we have based our topics around the seasons; in spring we watched the first buds on the trees, raised tadpoles into frogs and watched butterflies and ladybirds emerge from their cocoons. In summer we enjoyed the abundance of flowers and wildlife, both in our own gardens, as well as in the park. We watched the tadpoles we raised swim about as baby frogs and the ants making huge nests and looking after their eggs. In Autumn we enjoyed puddle walks, leaf showers, perfecting our den building on rainy days and collecting leaves and conkers from the trees in the park. Finally, in the winter we slowed down, snuggled up in sheepskin rugs reading stories, lit fires, observed the morning ice and made bird feeders to help our feathered friends through the colder months.

Once again, we have made extensive use of the park, in particular the NaturEscape, in our daily Forest School sessions. As our older ones are getting ready to start a new adventure in September going to school, we watch with joy the impact this has had on their confidence, self regulation, capabilities and love of nature.



"Thank you so much for all your hard work - we all feel very lucky that [my child] started his education with you. We will all miss Flo's very much!"

Staff Development

We have trained a team member to gain her Level 3 Forest School Leader accreditation and supported a student on a Childcare Level 3 course. From September 2023 we will also support an existing team member to carry out her Level 2 Childcare apprenticeship.



New: Flo's Forest School

We are very excited to announce that we are expanding and will soon open a new Forest School at Barracks Lane Community Garden in the Autumn! This term-time, mornings-only offer will help to reduce our long waiting list. It will bring much needed funded spaces in time for the government's upcoming extended childcare offer.



“I am extremely thankful for all the support and encouragement about doing the Forest School training, especially how easy it has been to implement Forest School on a daily basis at Flo’s Nature Nursery! Thanks to all the amazing staff, management and board.”



Tanja Fletcher (left) has been the nursery manager at Flo’s since we started in 2018

“Thanks for taking the time to support [my child] so well at Flo’s. You and the rest of the team have created a very special place for young people to thrive.”



“Two years at nursery has made [my child] flourish in many areas. She is ready for her next adventure and is looking forward to starting school. Thank you for everything you’ve done to help and support her whilst she’s been at Flo’s. She’s had an amazing time.”

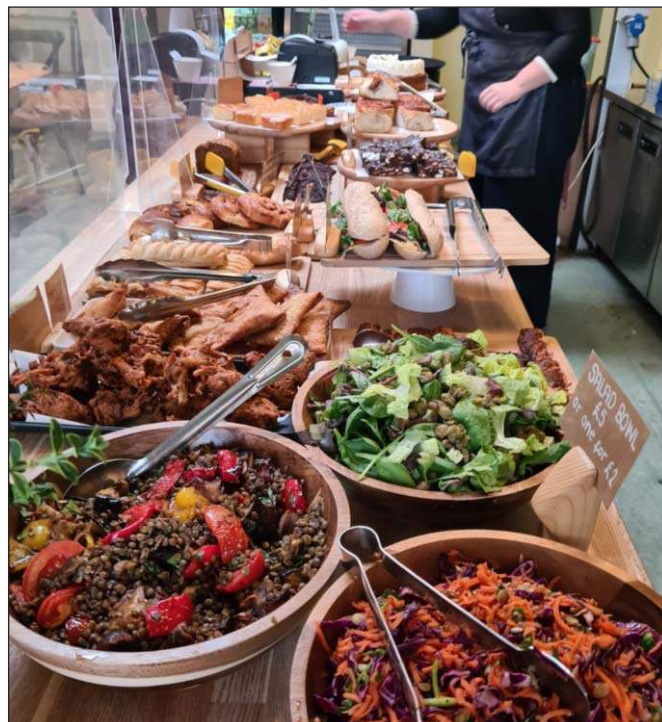
Nursery Facts & Figures

The nursery has supported more than 60 families over the last year, including 18 families in receipt of two year old funding or Pupil Premium and 9 children with additional needs. We are a diverse community, with 32 children and staff speaking English as an additional language, a fact we celebrate by learning key words and songs in many languages.

Flo's Café

Open 7 days a week Flo's cafe offers delicious coffees and a freshly prepared, mostly vegetarian menu. All the money spent at the cafe goes towards sustaining Flo's as a centre and supporting our community work.

The last year has been a tough time for all in the hospitality industry! As we emerged from the struggles and support of pandemic times (subsidies and reduced VAT) we were caught short by the shocking impact of inflation. We have undertaken serious soul and spreadsheet searching to try to balance all our values and sometimes competing needs. We strive to create good in all we do: being good to staff, good for our community, good to suppliers, with good products and good service, while trying to balance the need to be a viable business and meet our ever increasing costs. We are proud to say that we are surviving, if not quite thriving, yet!



We have had some wonderful support from our loyal customers, our amazing team of 17 local people, as well as a grant from OxLep to develop our outdoor space and marketing to make us an even more attractive place for visitors. Thanks also to the Step Change grant from OCF for its continued support this year. We continue to welcome lots of volunteers in the refill shop and cafe, many of whom go on to find employment at Flo's or elsewhere.

Our income made a significant increase this spring due, in part, to price increases based on detailed necessary profit margin analysis but also due to increased sales, both to existing and new customers. Sales in April 2021 were £32,794, while sales in April 2022 were £42,615 and sales in April 2023 were £56,401.



Rizwana is our week-day chef



Fadia our chef, with her son Karim



We make around 7,500 sales a month which averages as a sale every 2 minutes; on peak days it's more like a sale a minute! We are very proud of the team for keeping up with this level of demand with limited resources.

The kitchen has been showcasing the cuisines of our lead cooks - curries from Rizwana and Syrian specials from Fadia. The percentage of sales of cooked food has increased which is great for our sustainability and profitability. £5,129.72 (12%) in April 2022 to £11,996.13 (21%) in April 2023. We have also introduced an ice cream counter which has proven to be very popular. Catering has also increased, and has potential as an area for growth.

We have continued to provide a weekly 'pay-as-you-can' community meal for everyone, as well as offering free pasta and fruit for all kids over the school holidays. This year we've also offered free lunches for all the children on the OCA holiday playscheme, and continue to provide freshly cooked, vegetarian, healthy meals for the nursery children at zero profit. Our menu still includes many low-cost options even as other products have had price increases, and we staunchly continue to offer £1 tea.



Mustafa our Cafe Manager with Coco



Family work

We offer 4 regular weekly family sessions for families with under 5s.

Story Explorers

...for 0-3yr olds is a sensory story session with songs, rhymes, and Makaton signs. It's a great way for children to develop their language and listening skills and for parents to get out of the house and meet other parents.



This year we ran 86 sessions, with 790 attendances over the year. Thanks to grant funding from the BBC Children in Need fund, one fifth of these sessions were grant funded and therefore free for children with communication and social development needs.



Victoria
Community and Family
Coordinator

Rainbow Families Drop-In

...is the only one of its kind locally, running 42 sessions since it began. One regular told us: *"It's great for my child to be able to connect with other kids from LGBT+ families. It's an investment for her future in my opinion. We feel much more connected to other families now."*



Nature Explorers

...our free outdoor play session, ran 38 sessions this year, welcoming early years children with their parents, carers, grandparents, childminders and volunteers to increase their connection to each other and nature and share play ideas. *"The routine of attending Nature Explorers has given us both something to look forward to at the start of every week. My child has been shy around other children but since attending Flo's has formed some meaningful friendships and it is wonderful to see those friendships begin to blossom."*



Outdoor Explorers

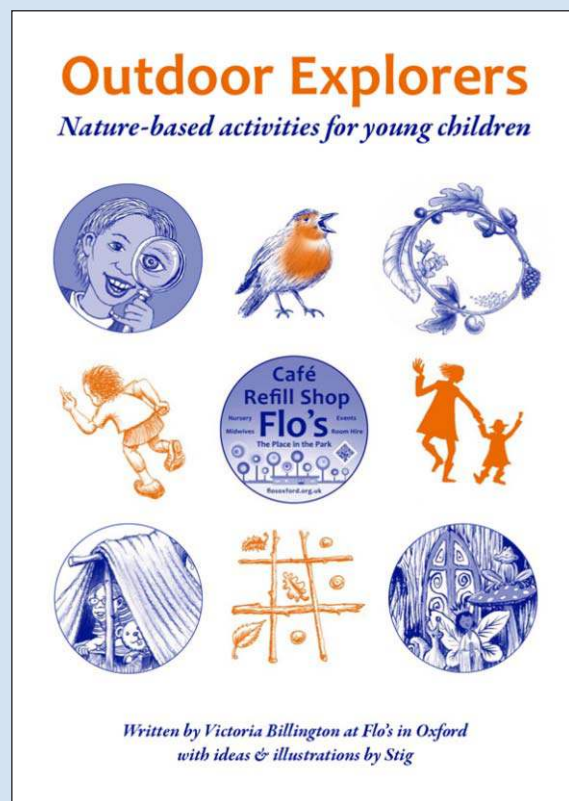
Nature-based activities for young children

This year saw the launch of Flo's first in-house publication created by Victoria and Stig.

A 20-page Nature Explorers Booklet is available for a donation at Flo's Refill Shop. Over fifty explorer packs were created and given to local families to encourage outdoor adventures, which are great for body and mind.

The booklet introduces dozens of fun activities to try out, rain or shine, with clear instructions alongside 80 illustrations. Learn three simple but super-useful knots, build a den, make a hammock, identify the footprints of common Oxford animals, make art from found objects, recognise familiar flowers, build a bug bedroom, identify some common insects and try out basic foraging.

This booklet makes a great gift. You can also download a free PDF of the booklet from the Community page of Flo's website here: floxford.org.uk/community.



First Fridays

First Fridays have continued to be a great monthly community event throughout the year. Highlights this year included guests from Palestine running dance and craft workshops, a special Jubilee tree planting, a choir workshop, storytelling, outdoor play activities and a lolly lab by No Vice Ice. There is always a fire pit to sit at together, DIY pizza making with **The Pizza Midwife**, and delicious hot food from **Oxford Community Action Kitchen**, a community enterprise incubated at Flo's.



Early Lives Equal Start (ELES)

The Early Lives Equal Start project works towards ensuring that every mother in OX4 feels well supported and can thrive.

Early Lives Equal Start launched this year by Flo's in partnership with Oxford University Health Trust, our local community midwives and the Oxford Maternity Voices Partnership. Alongside women with lived experience, we are together designing a programme which aims to empower and support women and birthing people from African, Caribbean, Asian, Middle Eastern and East Timorese backgrounds living in OX4. The project is building capacity and power amongst local mothers to overcome structural barriers, access maternity services and improve local mothers' experience of pregnancy.

The project started in response to local and national needs that were being highlighted around the inequalities in the maternity care system; some maternity care outcomes were consistently lower for women of colour than for white women. Local groups OCA and Health Watch were doing research about experiences in Oxford specifically and their findings supported national research. Responding to this, we ran a series of focus groups with women from Black and minoritised backgrounds who had recently given birth in Oxford to hear their experiences. Together we began to develop a new project to address some of these inequalities in a practical way, whilst also aiming to tackle some of the underlying systemic forces at play...and so the Early Lives Equal Start Project began.



Launch of the Equal Start Maternity Advocates programme

In January we were pleased to appoint our first Maternity Advocate and Community Organiser (MACO) Melissa Latchman, and more recently a MACO assistant Adelia Fernandes (who's focus is on the Timor-Leste community).

The project now works along 5 main strands

- Targeted and effective antenatal education and support
- Maternal justice case work
- Pre and post natal support
- Working towards real advocacy by strengthening the community voice of mothers through co-production and development
- Community co-produced research and evaluation



So far we have supported 47 women through the project. Of these, 26 women had language barriers that prevented them from accessing the appropriate support, 25 women were facing homelessness, 30 women were facing extreme poverty and others were dealing with domestic abuse and immigration challenges.

In September we will be launching 2 new programmes:

- **The Equal Start Community Outreach Team** will be a new opportunity for experienced mothers to take part in a practical program of training and development to better support pregnant women and new parents in our local area.
- **The Equal Start Maternity Advocates Programme** will be a new opportunity for mothers to participate in a programme of training in advocacy, research and project evaluation and take part in evaluating and shaping the direction of the Early Lives Equal Start project.

Find out more flosoxford.org.uk/eles



Dr. Brenda Kelly with members of the Early Lives Equal Start steering group

Stories from people at Flo's

My community and I am right in it

“Sometimes you walk in, and there's mums breastfeeding in one place, there's kids playing in another place, there's old people chatting in another place, the environment's being looked after. Everybody who works here puts in and then it's reflected back by the people who come. And it's quite amazing sometimes.

This is the heart of the community, isn't it? This building for this area, this is the heart of the community and I feel like, just by serving people in the shop, and walking around and cleaning tables and whatever, and in the nursery where I still know all of the nursery parents, I feel like this is my community, and I'm right in it.”

The Beating Soul

“Flo's hadn't been open long and I was going through a bad mental health crisis. I was quite ill. When I started to recover, I wanted to do something positive and productive.

I was volunteering, but I felt as if I was being held. It was good to have that routine each week. It was such a positive, creative team. It wasn't all about me recovering. My mental health doesn't define me. It influences who I am, and it makes me different to how I was before, but why the hell should it define me? It's not about being defined by your hidden disability. It's about doing something that enables you.

Flo's has enriched my life. I'm so pleased the space is being used again, that it didn't just shut. For a time it was a derelict building in the middle of the park. But now, Flo's is like the beating soul of Florence Park. It's alive and it's happening. Surely the world would be a better place if we had more places like Flo's?”

Midwives - absolutely amazing

“The midwives as well, they were amazing when I first came down here. I had difficulty within the first week with breastfeeding, and they were absolutely amazing. They completely changed it for me. It went from being a bit of a nightmare to being absolutely fine.”



There is team work here

“There's teamwork here. No one says oh, it's not my job. Everyone helping each other.

I'm so proud because when I was Assistant Chef, I was quiet and just doing my work and that's all. But when I started the chef job, I speak to everyone I need to, like what we need, how can we order and everything. And everyone respect me.”

A catalyst for many different things

“Flo's was there for me, to help me back on my feet in my career, help me understand a bit more about social impact work, a bit more about purpose-driven businesses, which I didn't necessarily know before. And I feel really confident now that the next step within my career is actually going to be much more aligned to me as a person and Flo's has given me that....

Flo's is a catalyst for so many different things, because there's so much going on, it doesn't matter what skillset you have, it doesn't matter who you are, there's a place for you. And I think that that's, that really is a really key thing for me, there is always a place for you at Flo's.”

Cool to be you

“You've got all sorts of people coming here because they feel welcome. The Muslim community can be more cautious, because it can be difficult in places to feel welcome. But there's certain things that can make somewhere more welcoming than others, and I feel like Flo's has mastered it. They've organically cracked that wide open. It just feels like it's a place where it's cool to be you.”

Read more about Flo's impact here: floxford.org.uk/stories

OX4 Food Crew

The OX4 Food Crew is an alliance of nine grassroots organisations working together to tackle food poverty and food inequality in OX4 which includes some of the most disadvantaged areas of our unequal city. Our partners include: Waste2Taste, Oxford Community Action, Oxford Mutual Aid, Syrian Sisters, Donnington Doorstep, Oxford City Farm, No Vice Ice and ArkT.

By working together, the OX4 Food Crew is more resilient and sustainable than each group working by itself. We do this through:

- better coordination between alliance organisations
- cross referrals and shared information from the ground about needs from those with current lived experience of food poverty
- fundraising support for specific delivery projects

Flo's delivers some of the work of the OX4 Food Crew, and also has a vital role in being the administrative partner of the food crew-managing a large grant from the National Lottery Fund, and employing two project staff: a coordinator and a fundraiser.



Every Monday at Flo's we run our weekly pay-as-you-can Community Meal. No questions are asked, lunch at Flo's is always pay by anonymous donation on a Monday.

Part of Flo's mission is to support other community enterprises to be set up and support them to generate income towards their own community goals. We do this through working closely with grassroots groups and individuals, providing space, funding, advice and opportunities. This year we worked especially closely with **OCA Kitchen** who have now launched their own catering business & cafe, and **No Vice Ice**, who run their ice lolly business out of our premises, training people with invisible health conditions.

For more information please visit:

ox4foodcrew.co.uk

noviceice.com

oxfordcommunityaction.org



In the last 11 months the OX4 Food Crew ensured that:

- 1858 people accessed community meals
- 3867 people received emergency meals or food parcels.
- 8966 people engaged or became aware of Food Crew Projects
- 163 people accessed food education or growing projects
- We also had 525 volunteers support us over this period

"The pay-as-you-feel meal deal at Flo's works very well for me, the food is healthy and tasty. The atmosphere is relaxing and welcoming, and I appreciate the paying system."

Flo's Refill Shop

Flo's Refill Shop stocks lots of unpackaged food products and household cleaning products. This enables people to buy more locally and reduce their plastic waste. And we are lucky to be frequented by many local people who share our ambition! We also stock local eggs and bread and on Fridays have a pay-as-you can vegetable stall where all donations go to the OX4 food Crew.

The shop's coordinator is supported by lots of amazing volunteers - this year, we have been delighted to welcome a total of 31 volunteers to the Refill Shop. This includes some people who started volunteering when the shop opened in June 2019 and have stuck with it ever since! Refill volunteers represent the diversity of people living in and around the local area. All ages are represented: our youngest start at 14 and we have people of retirement age, as well as every generation in between. What makes the Refill Shop such a great place to do your shopping, apart from the great range of food and excellent quality cleaning products, is that you never know who will be helping you. We have had volunteers from Ukraine, South America, France, Turkey, Japan and England.



Helen Osborn, Refill Shop Manager

What do we stock?

- Rice and Beans
- Cereal and Pasta
- Nuts and Seeds
- Herbs and Spices
- Dried Fruit and Chocolate
- Roasted Coffee Beans
- Local Bread and Eggs
- Oils and Vinegars
- Grains and Pulses
- Toiletries
- Household Cleaning Products
- A selection of food cupboard staples, eg: yeast, nut butter, soy sauce, jam, honey etc.

This year we were very pleased to work with:

- Two volunteers who completed their Bronze Duke of Edinburgh Award
- One who gained the Silver Duke of Edinburgh Award
- Five young people volunteering in their free time to give something back to the community
- One young person who did their school work experience placement
- Four volunteers who needed different levels of additional support and who were referred to us by external agencies

A huge thank you to all our volunteers. What a great way to learn new skills, meet new people and contribute to Flo's sustainability.

We're open Tuesdays to Saturdays from 11am to 5pm. Bring your empty containers!



Florence Park Community Midwives

The Florence Park Community Midwives (formerly the Isis community midwives) have been based at Flo's since we opened, and worked here when it was a children's centre.

This year we welcomed two further teams to Flo's with the Cowley Road Medical Practice and the Donnington Midwifery Team now both running some of their clinics at Flo's. We have renovated a room in the pavilion into a new clinic room and the central pavilion room is now used as a waiting room as well as a room for group activities (e.g. antenatal classes).

"I am one of the community midwives here in the Florence Park Midwives Team and I have worked in this team for 17 years. One of the reasons that working at Flo's is beneficial is that almost all the women we see prefer coming here to going to their GP surgeries or the hospital. Many of the women we work with would require at least 2 bus journeys to get to the JR hospital. So coming here allows us to provide care where it is needed, more locally in the community.



I love working at Flo's because it's a beautiful environment. And we feel part of the community - being able to introduce the women and their families to what's on offer at Flo's and in the wider area is easier from here. The cafe is often full of young families and women breast feeding. It's really lovely to be part of the community that is provided and helped here at Flo's." - Nathalie Hilton

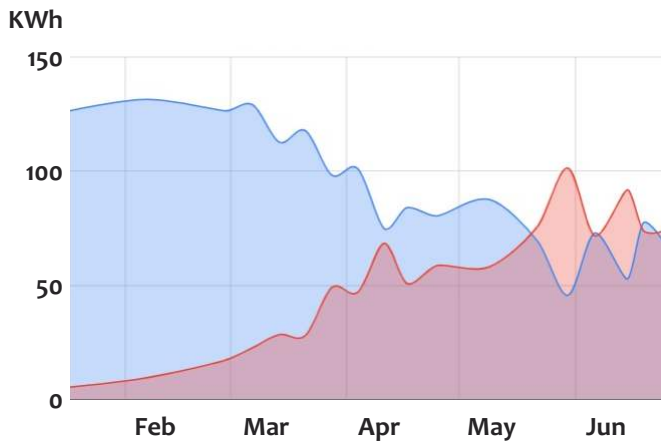
Flo's goes solar

In October 2022 we were delighted to finally install solar panels on the roof of Flo's. This has been an ambition since we opened and is part of our commitment to reducing Flo's carbon footprint as much as possible. Reaching this milestone would not have been possible had it not been for the many generous donations from our community, and from the OxFutures grant- thank you all!



Since installation, the panels have produced 8840 KWh of electricity which would otherwise have come from the grid - through this we have already saved over £5,000 in electricity bills. At the height of summer when the skies are clear, we are able to satisfy two thirds of our daily demand from the solar panels alone. Given the increase in energy prices in the past year, being able to supplement our energy from solar has been hugely beneficial for Flo's. Going forward we'll ensure they're clean so the panels are at their most efficient, and keep you up to date on their progress. This graph shows our energy consumption reducing as we enter the summer months thanks to the power of solar.

Flo's daily energy use from Grid vs from Solar



Finances

April 2022 – March 2023

We employed over 40 people, and spent over £920k providing local services and community support.

Flo's - The Place in the Park is run by **People, Place and Participation Ltd**, which also has a trading subsidiary called **Flo's Trading**. Together they are known as a "group". Between April 2022 and March 2023 the group generated an income of £1,050k and expenditure was £938k. Income from grants more than doubled, with most being restricted funds for existing and new community projects - many of which support other smaller local grassroots groups. Cafe and shop sales increased by £77K (21%) helping us face increased energy and food costs. Donations income also increased due to generous community support for our solar panel appeal and the OX4 Food Crew.

Our key challenge remains to keep our services inclusive, while still generating enough income to meet our social and environmental goals, now and in the future.

Read the full accounts at: floxoxford.org.uk/agm-2023/

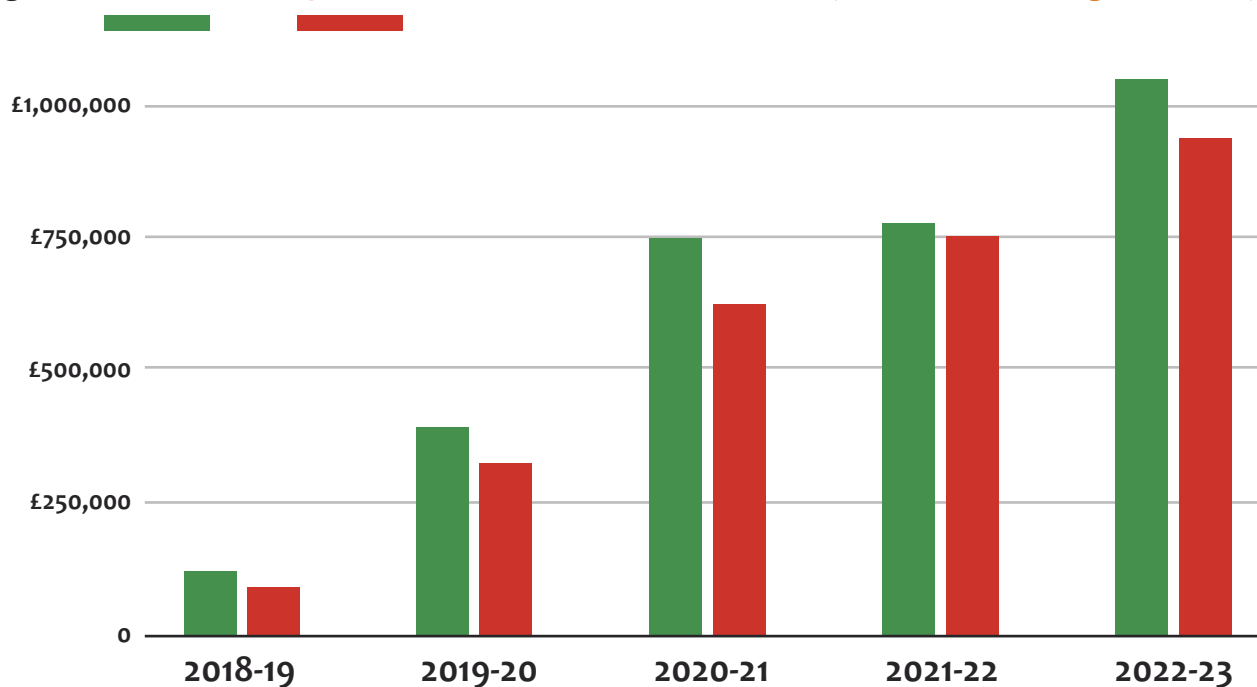
Figure 1: Income sources at Flo's for 2022-2023

Donations	27,624	3%
Grant income	259,083	25%
Room hire	36,493	4%
Nursery fees	255,054	25%
Café sales	361,281	35%
Refill shop sales	81,105	8%
Other (membership, courses)	17,312	2%
Total:	£1,037,953	

Figure 2: Expenditure at Flo's for 2022-2023

Centre and room hire	70,150	8%
Nursery	242,639	26%
Community Projects	137,306	15%
Café	393,527	43%
Refill Shop	79,659	9%
Total:	£923,281	

Figure 3: Income and Expenditure for the first 5 years at Flo's (PPP & Flo's Trading combined)



Thanks to all our supporters & partners

We want to say a big thanks to all the people and organisations who've helped Flo's flourish this last year through generous donations, grants, time and support.

In particular we would like to thank:

- The Florence Park Community Midwives
- Brendan and the team at Plainlaw Solicitors
- Local Cllr Dunne, Cllr Latif, Cllr Hicks, Cllr Edosmwan and Lord Mayor Cllr Arshad
- The Pizza Midwife Kirsten
- Individuals in our community who've given donations towards our community work
- Russel Hardwick
- Zoe Broughton and Film Oxford
- Iman Monawar Hussain
- The Oxfordshire Lieutenancy
- OCA kitchen, No Vice Ice and Damascus Rose Kitchen
- John Caunt and the Step Change panel
- The National Lottery Community Fund
- Trust for Oxfordshire's Environment
- Good Food Oxfordshire
- Oxford Food Hub
- OSEP (Oxfordshire Social Enterprise Partnership)
- Barracks Lane Community Garden
- Co-ops UK
- Aspire Oxford
- The Nature Effect CIC

- Jessops and Cook Architects
- All our regular hirers including the Motherkind Cafe, OxPip, The Oxford Hub, The Sling Library & the Health Visitors
- Florence Park Community centre
- Elder Stubbs Allotments for donations to the refill shop
- Routes Coffee
- Dr. Brenda Kelly, Carrie Granger, OMVP and others on the ELES advisory group
- All our partners in the OX4 Food Crew



In loving memory of Kate Jury, with huge gratitude for all she did for the community and in setting up the NaturEscape



And thanks to the team at Flo's:

- All the volunteers who run the refill shop, tend the garden, read to the nursery children or serve meals every week
- The nursery parents
- The Trustees of PPP Ltd. and the Directors of Flo's Trading
- The wonderful staff at Flo's

For all staff & trustees see: flosoxford.org.uk/meet-the-team

Reg. Address: Flo's, Rymers Lane, Oxford, OX4 3JZ
Community Benefit Society Number: 7713



Facebook: @flosoxford
Instagram: @flosoxford
Website: flosoxford.org.uk

